

# SUBMITTAL DATA SHEET



Series Name: Extreme Heat AHU Series  
Model Number: DLCURAH48ABK / DLFUAAH48XAK

## Wall Mounted Heat Pump System

Location:	Approval:
Engineer:	Date:
Submitted to:	Construction:
Submitted by:	Unit #:
Reference:	Drawing #:



## INDOOR SPECIFICATION

Indoor Air Flow (H/M/L) (CFM)	1470.59/1282.35/1094.12/905.88	
Indoor Noise Level (H/M/L) (dBA)	50/47/43.5	
Dimension (WxDxH)	inch	21 x 21 x 49
	mm	534 x 534 x 1245
Package (WxDxH)	inch	26-5/8 x 24-3/8 x 52-1/2
	mm	675 x 620 x 1335
Net/Gross Weight	lbs	131/156
	kg	59.2/70.9

## OUTDOOR SPECIFICATION

Compressor Type	ROTARY	
Refrigerant	R410A	
Factory Charge	1460±15ml	
Refrigerant Oil	VG74	
Outdoor Air Flow (Max) (CFM)	4412	
Outdoor Noise Level (dBA)	64	
Dimension (WxDxH)	inch	37-1/2 x 16-3/8 x 52-1/2
	mm	952 x 415 x 1333
Package (WxDxH)	inch	43-1/8 x 19-1/2 x 58-1/4
	mm	1095 x 495 x 1480
Net/Gross Weight	lbs	220/249
	kg	99.9/112.9

## EFFICIENCY

Cooling		Heating	
SEER2	15.6	HSPF2-4	9.4
EER2	8.2	COP	3.2

## PERFORMANCE of Cooling

Cooling (Btu/hr)	
Rated Capacity	47000
Min/Max Capacity	15000-48000
Moisture Removal	4.96 L/H (10.47 pint/H)
Standard Operating Range	5°F-122°F (-15°C-50°C)
Rated Cooling Conditions:	Indoor: 80°F DB/67°F WB Outdoor: 95°F DB/75°F WB

## PERFORMANCE of Heating

Heating (Btu/hr)	
1. @ 47°F Rated (Min/Max)	50000(11000-55000)
2. @ 17°F Rated	36000
3. @ 5°F Max: Capacity / COP	46000 / 1.9
Standard Operating Range	-22°F-75°F (-30°C-24°C)
1. Rated Heating Conditions:	Indoor: 70°F DB/60°F WB Outdoor: 47°F DB/43°F WB
2. Rated Heating Conditions:	Indoor: 70°F DB/60°F WB Outdoor: 17°F DB/15°F WB
3. Heating Conditions, Compressor Operating at Max. Frequency	Indoor: 70°F DB/60°F WB Outdoor: 5°F DB/5°F WB

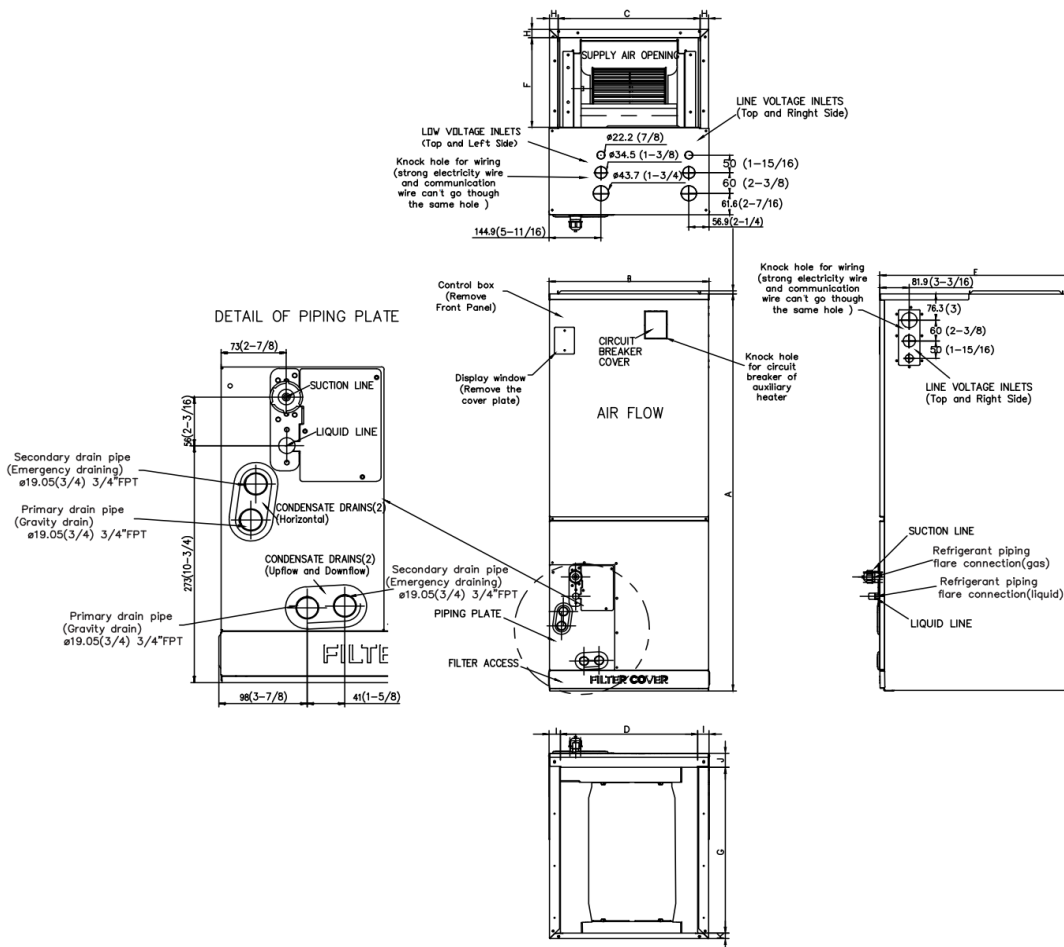
## ELECTRICAL

Power Supply	208/230V, 1Ph, 60Hz
System MCA	40/7.5
Connection Wiring	AWG 14-2
System MOCP	50/15
Compressor RLA	33
Outdoor Fan Motor RLA	1.2
Outdoor Fan Motor W	85
Indoor Fan Motor RLA	6
Indoor Fan Motor W	/
System Power Input @ Cooling (W)	5731(815-5700)
System Power Input @ Heating (W)	4652(830-5700)
<b>Recommended breaker size(A)</b>	<b>40/15</b>
MCA: Min. circuit amps (A)	MOCP: Max. over current protection (A)
RLA: Rated load amps (A)	W: Fan motor rated output (W)

## PIPING

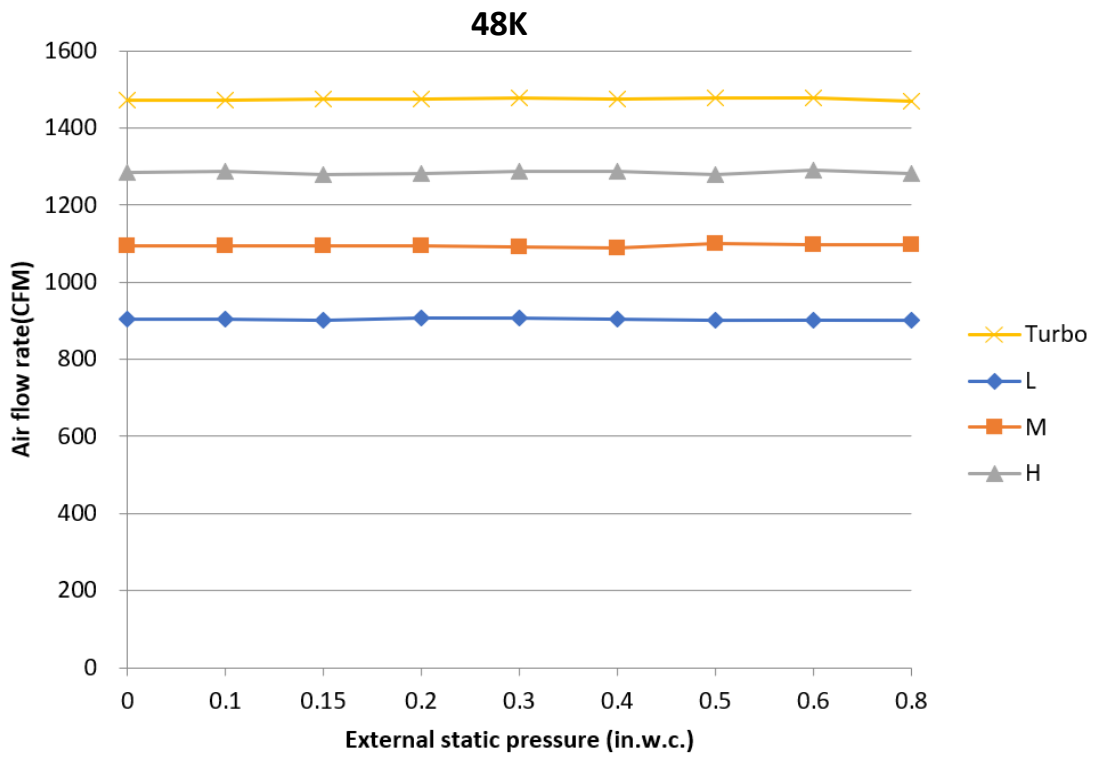
Liquid Size	3/8in (9.52mm)
Gas Size	3/4in (19mm)
Drain Size	5/8in (15.88mm)
Max. Piping Length	213.3ft (65m)
Max. Height Difference	98.4ft (30m)
Max. Pre-charged Length	25ft (7.5m)
Refrigerant Pre-charged Amount	169.31oz (4800g)
Additional Charge of Refrigerant	0.69oz/ft (65g/m)
Connection Method	Flared

### Indoor Unit Dimension

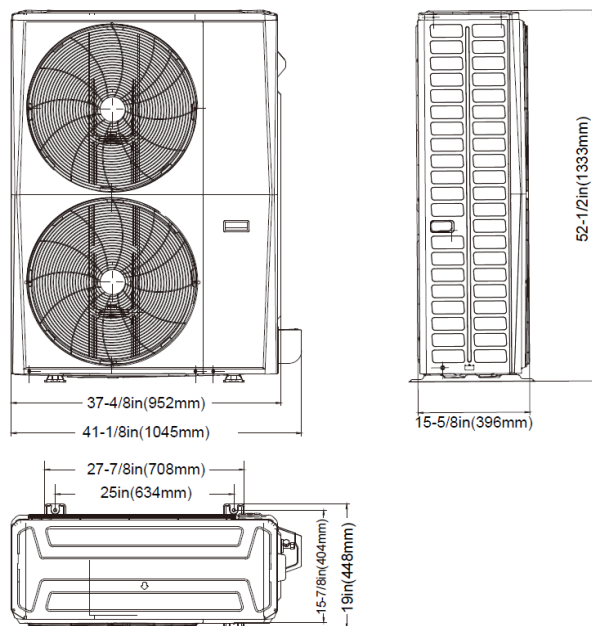


Dimensions	Model	18k/24k		30k/36k		48k/60k	
		inch	mm	inch	mm	inch	mm
A	Model Height	45	1143	49	1245	53	1346
B	Model Width	17-1/2	445	21	534	24-1/2	622
C	Supply Air Opening Width	15-5/8	397	19-1/8	486	22-5/8	575
D	Return Air Opening Width	15-1/8	384	18-5/8	473	22-1/8	562
E	Model Depth	21	534	21	534	21	534
F	Supply Air Opening Depth	10-1/4	260	10-1/4	260	10-1/4	260
G	Return Air Opening Depth	18-3/4	476	18-3/4	476	18-3/4	476
H	Supply Air Opening Clearance	15/16	24	15/16	24	15/16	24
I	Return Air Opening Side Clearance	1-1/4	32	1-1/4	32	1-1/8	28
J	Return Air Opening Front Clearance	1-1/2	38	1-5/8	41	1-5/8	41
K	Return Air Opening Back Clearance	5/8	16	5/8	16	3/4	19

Fan Performance



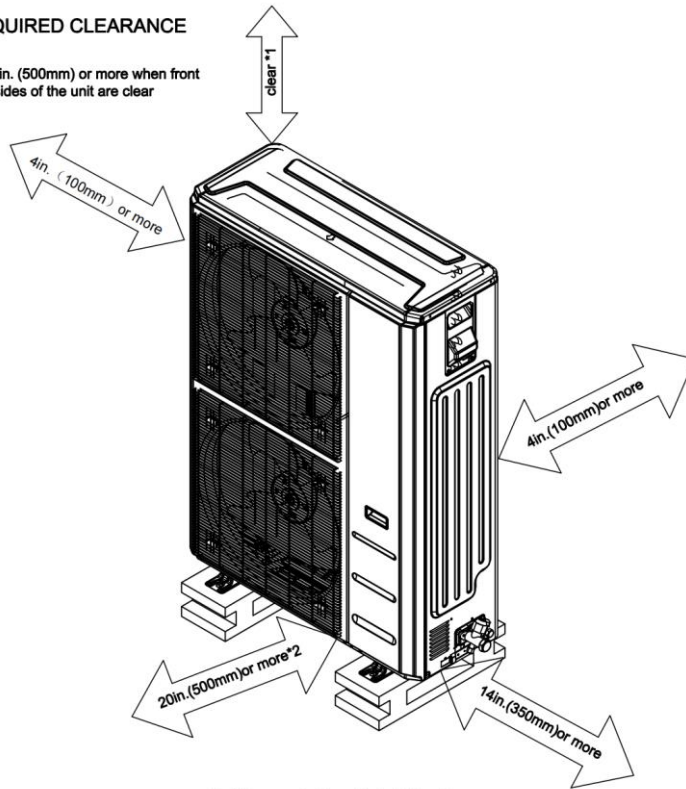
Outdoor Unit Dimension



Installation Instruction

REQUIRED CLEARANCE

\*1 20in. (500mm) or more when front and sides of the unit are clear



\*2 When any 2 sides of left, right and rear of the unit are clear

## **North American HVAC Products Ltd.**

---

Add.: #100 5118 N Fraser Wy, Burnaby, BC V5J 0H1

Tel: 604-430-8496 [info@nahvac.com](mailto:info@nahvac.com) [www.nahvac.com](http://www.nahvac.com)

Midea reserves the right to change the specifications of the product, and to withdraw or replace products without prior notification or public announcement. Midea is constantly developing and improving its products.