



Midea Multi-Position Air Handler Inverter Heat Pump & Standard Air Handler System

Flexibility to adapt to your existing spaces



Perfect for North American Homes



Core Features of Standard Air Handler

SEER2 Up to
19.0

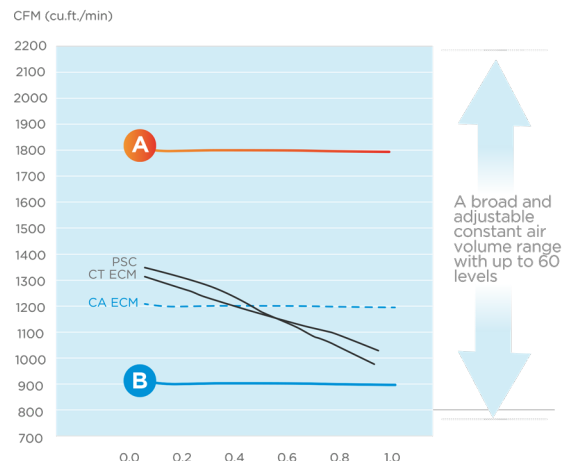
EER2 Up to
12.5

HSPF4 Up to
10.3

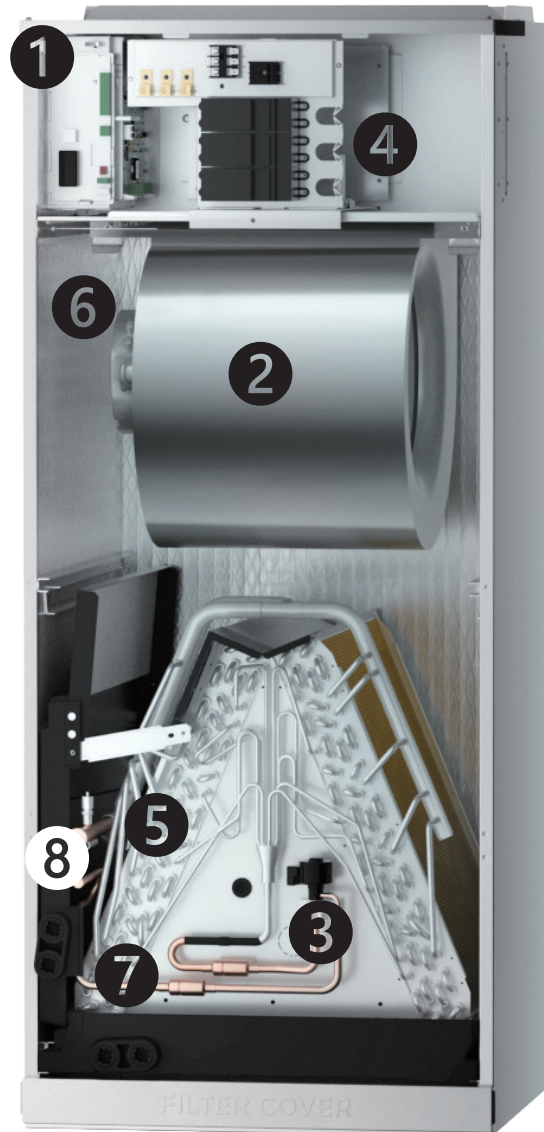


Customized Air Volume For Your Home

- A** A house in a hotter Southern region, like Las Vegas, needs faster cooling.
- B** A limited space needs less airflow.



Advanced Components



- 1 Compatible with 485 or 24V: automatically identifying the control mode, no need for manual conversion. The indoor unit is designed to be compatible with both 115V and 230V power. The default setting is 230V. You can manually set it to 115V.
- 2 Constant CFM ECM motor provides consistent airflow up to 0.8 in. w.c.
- 3 Electronic expansion valve (EEV) control: better throttling for highly efficient operation.
- 4 Optional auxiliary heat kits available up to 10 kW.
- 5 All-Aluminium Coil: Preventing termite-induced pitting corrosion
- 6 Quiet Operation – down to 35 dB(A) level.
- 7 A2L Detection Sensor
- 8 Nitrogen Protection: The indoor unit is Nitrogen charged; you will know if there is a leak on the Indoor unit before making connections.

Fits Different Installation Spaces

4-Way Installation (Left/Right/Up/Down)



Easy To Service

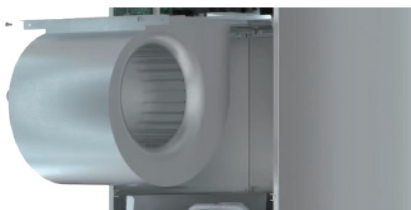


Magnetic Filter Cover

One click for quick and easy filter access.

Easy Access

Remove two screws for access to the electrical board, blower, and heater.



Slide-Out Fan

Easily remove the fan motor for straight forward maintenance.

Find Issues Quickly

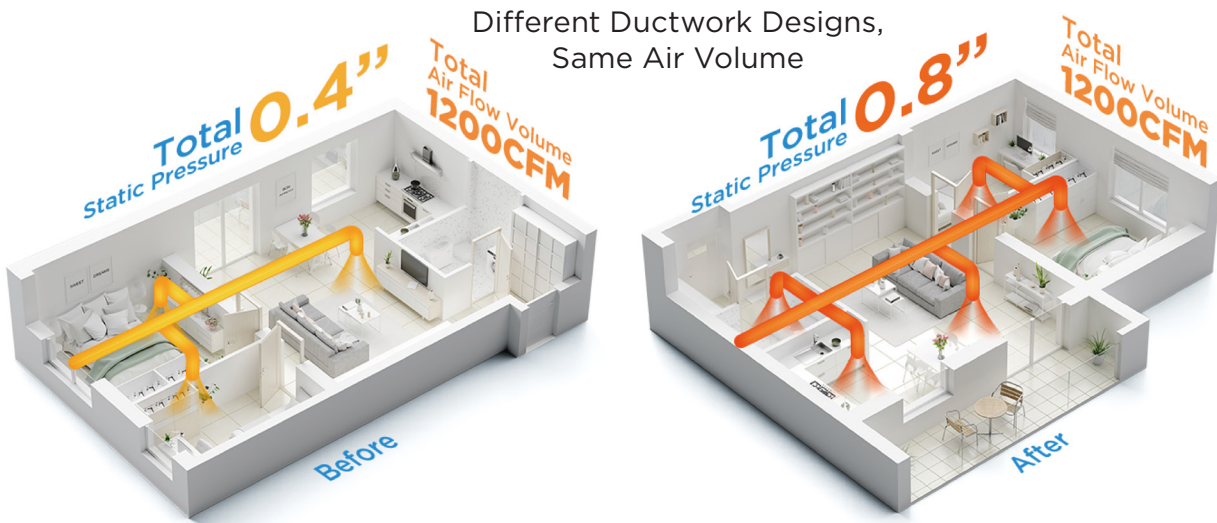
Easy access to the error code display. Simply remove two screws to remove the cover and view the error codes.

Thanks to advanced mutual data communication technology, the AHU system can intelligently self-detect the failure cause and generate a corresponding code.



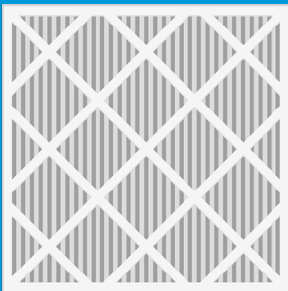
Constant Airflow Technology 2.0

Computational Constant Airflow technology enables airflow to automatically adapt to the existing ductwork design or issues caused by blocked coils, dirty filters, and improper duct sizing by adjusting output power and fan speeds. Even without a call for heating or cooling, the technology will still work to ensure optimal airflow.



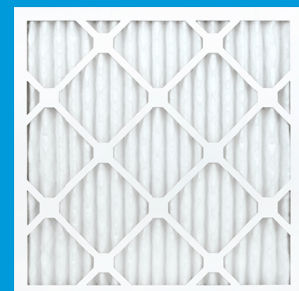
Diverse Filtration Needs, Same Air Volume

Normal Filter



Total Static Pressure **0.4"**
Total Air Flow Volume **1200CFM**

MERV 13



Total Static Pressure **0.8"**
Total Air Flow Volume **1200CFM**

Seven Capacities - Three Cabinet Sizes

A 1.5-2 tons: 17-1/2" x 21" x 45"

B 2.5-3 tons: 21" x 21" x 49"

C 4-5 tons: 24-1/2" x 21" x 53"



EVOX AHU Xtreme Heat Specification

Model	Indoor Unit		MAUHE-H18B-2A	MAUHE-H24B-2A	MAUHE-H30B-2A	MAUHE-H36B-2A
	Outdoor Unit		MO1HE-H18B-2A	MO1HE-H24B-2A	MO1HE-H30B-2A	MO1HE-H36B-2A
Performance						
Power Supply	IDU	V, Ph, Hz	115/208/230, 1, 60			
	ODU	V, Ph, Hz	208/230, 1, 60			
SEER2 (AHRI 210/240-2023)	Cooling Capacity	Btu/h	18,000	23,000	30,000	36,000
	Heating Capacity	Btu/h	19,000	24,000	34,000	37,000
	SEER2	Btu/W	19	18.3	16.8	16.5
	EER2	Btu/W	12.5	11.7	11.7	10.0
	HSPF2 (Region IV)	Btu/W	9.7	10	10	8.2
	HSPF2 (Region V)	Btu/W	8	8	8.3	6.7
Heating at 5°F (-15°C)	Rated Capacity	Btu/h	18,000	21,600	32,600	32,000
	COP	W/W	2	1.87	1.96	1.85
Indoor Unit						
Air Flow Volume	Turbo/Hi/Mi/Lo/Si	CFM	618/577/ 530/489/489	824/759/ 695/630/630	989/895/ 806/712/712	1189/1083/971/ 865/865
Noise Level	Turbo/Hi/Mi/Lo/Si	dB(A)	41/41/39/33/33	44/44/42/28/28	47/46/43/27/27	49/48/46/26/26
Dimension	WxDxH	mm	445 × 534 × 1143	445 × 534 × 1143	534 × 534 × 1245	534 × 534 × 1245
	WxDxH	inch	17-1/2 × 21 × 45	17-1/2 × 21 × 45	21 × 21 × 49	21 × 21 × 49
Net Weight		kg	48	47.9	58.6	58.6
		lbs.	106	106	129	129
Piping Size		Liquid side	3/8			
		Gas side	3/4			

Model	Indoor Unit		MAUHE-H36B-2A	MAUHE-H48B-2A	MAUHE-H60B-2A
	Outdoor Unit		MO1SE-H36B-2A	MO1HE-H48B-2A	MO1HE-H60B-2A
Performance					
Power Supply	IDU	V, Ph, Hz	115/208/230, 1, 60		
	ODU	V, Ph, Hz	208/230, 1, 60		
SEER2 (AHRI 210/240-2023)	Cooling Capacity	Btu/h	36,000	48,000	54,000
	Heating Capacity	Btu/h	37,000	50,000	56,000
	SEER2	Btu/W	17.3	16.5	16
	EER2	Btu/W	11.7	10.5	10
	HSPF2 (Region IV)	Btu/W	10.3	9.5	9
	HSPF2 (Region V)	Btu/W	8.6	8	8
Heating at 5°F (-15°C)	Rated Capacity	Btu/h	39,000	46,000	52,000
	COP	W/W	1.9	1.9	1.8
Indoor Unit					
Air Flow Volume	Turbo/Hi/Mi/Lo/Si	CFM	1189/1083/ 971/865/865	1601/1472/ 1283/1095/1095	1807/1583/ 1360/1136/1136
Noise Level	Turbo/Hi/Mi/Lo/Si	dB(A)	49/48/46/26/26	52/52/50/34/34	55/52/50/35/35
Dimension	WxDxH	mm	534 × 534 × 1245	622 × 534 × 1346	622 × 534 × 1346
	WxDxH	inch	21 × 21 × 49	24-1/2 × 21 × 53	24-1/2 × 21 × 53
Net Weight		kg	58.6	58.6	59.2
		lbs.	129	129	131
Piping Size		Liquid side	3/8		
		Gas side	3/4		

EVOX AHU Advanced Heat Specification

Model	Indoor Unit		MAUHE-H18B-2A	MAUHE-H24B-2A	MAUHE-H30B-2A
	Outdoor Unit		MO1BE-H18B-2A	MO1BE-H24B-2A	MO1BE-H30B-2A
Performance					
Power Supply	IDU	V, Ph, Hz	115/208/230, 1, 60		
	ODU	V, Ph, Hz	208/230, 1, 60		
SEER2 (AHRI 210/240-2023)	Cooling Capacity	Btu/h	18,000	24,000	30,000
	Heating Capacity	Btu/h	18,000	26,000	31,000
	SEER2	Btu/W	18.8	18.1	17.0
	EER2	Btu/W	11.0	11.0	10.7
	HSPF2 (Region IV)	Btu/W	9.1	9.7	8.5
	HSPF2 (Region V)	Btu/W	7.0	7.7	6.6
Heating at 5°F (-15°C)	Rated Capacity	Btu/h	11,200	21,600	19,100
	COP	W/W	2.0	1.87	2.0
Indoor Unit					
Air Flow Volume	Turbo/Hi/Mi/Lo/Si	CFM	618/577/ 530/489/489	824/759/ 695/630/630	989/895/ 806/712/712
Noise Level	Turbo/Hi/Mi/Lo/Si	dB(A)	44/43/41/33/33	44/44/42/28/28	46/46/42/29/29
Dimension	WxDxH	mm	445 × 534 × 1143	445 × 534 × 1143	534 × 534 × 1245
	WxDxH	inch	17-1/2 x 21 x 45	17-1/2 x 21 x 45	21 x 21 x 49
Net Weight		kg	48	47.9	58.6
		lbs.	106	106	129
Piping Size	Liquid side	inch	3/8		
	Gas side	inch	3/4		

Model	Indoor Unit		MAUHE-H36B-2A	MAUHE-H48B-2A	MAUHE-H60B-2A
	Outdoor Unit		MO1BE-H36B-2A	MO1BE-H48B-2A	MO1BE-H60B-2A
Performance					
Power Supply	IDU	V, Ph, Hz	115/208/230, 1, 60		
	ODU	V, Ph, Hz	208/230, 1, 60		
SEER2 (AHRI 210/240-2023)	Cooling Capacity	Btu/h	36,000	48,000	54,000
	Heating Capacity	Btu/h	36,000	48,000	54,000
	SEER2	Btu/W	16.1	16.0	15.2
	EER2	Btu/W	10.0	10.0	8.6
	HSPF2 (Region IV)	Btu/W	8.7	8.5	8.4
	HSPF2 (Region V)	Btu/W	7.0	7.1	6.8
Heating at 5°F (-15°C)	Rated Capacity	Btu/h	27,000	38,000	38,000
	COP	W/W	2.0	1.85	1.8
Indoor Unit					
Air Flow Volume	Turbo/Hi/Mi/Lo/Si	CFM	1189/1083/ 971/865/865	1601/1472/ 1283/1095/1095	1807/1583/ 1360/1136/1136
Noise Level	Turbo/Hi/Mi/Lo/Si	dB(A)	48/48/45/28/28	53/53/50/44/44	56/52/49/35/35
Dimension	WxDxH	mm	534 × 534 × 1245	622 × 534 × 1346	622 × 534 × 1346
	WxDxH	inch	21 x 21 x 49	24-1/2 x 21 x 53	24-1/2 x 21 x 53
Net Weight		kg	58.6	73.9	73.9
		lbs.	129	163	163
Piping Size	Liquid side	inch	3/8		
	Gas side	inch	3/4		



Complete Climate Solutions

Explore our full product line

