



SUBMITTAL DATA - OUTDOOR UNIT

MHA- V16WD2MN8

Midea M thermal Arctic Series Split Heat Pump

Job: _____

Location: _____

Schedule No.: _____

System Designation: _____

Engineer: _____

Architect: _____

Location: _____

Date: _____

For: Reference Approval Review Construction

Heat Pump Outdoor Unit

FEATURES

- ◆ R32 environmental refrigerant
- ◆ Two level of silent mode provides more comfort
- ◆ Multi-function wired controller and APP control
- ◆ All the units are equipped with DC compressor, DC fan motor, DC pump
- ◆ Powerful heating with high efficiency

WARRANTY

- ◆ Compressor – Within 42 months after leaving the factory, or within 36 months after product debugging and acceptance (whichever comes first)
- ◆ Unit –Within 18 months after leaving the factory, or within 12 months after product debugging and acceptance (whichever comes first)

*See warranty for details

SPECIFICATION

Model			MHA- V16WD2MN8
Power supply		V/Ph/Hz	208-230/1/60
Rated water flow		GPM	12.11
Compressor	Type	Twin rotary DC inverter	
Outdoor fan	Motor type	Brushless DC motor	
	Number of fans	1	
Air side heat exchanger	Type	Finned tube	
Refrigerant(R32)	Factory charge	lb	4-3/64
Throttle type		Electronic expansion valve	
Piping connections	Type	Flare	
	Liquid Dia.(OD)	in	3/8
	Gas Dia.(OD)	in	5/8
	Min. pipe length	in	78-3/4
Installation height difference	Max. pipe length	in	1181-7/64
	Outdoor unit above	in	787-13/32
	Outdoor unit below	in	787-13/32
Sound pressure level(39.7 inch) ¹		dB(A)	57
ODU Net dimensions (WxHxD)		in	44-1/64x34-1/16x20-19/32
ODU Packed dimensions (WxHxD)		in	46-55/64x38-3/16x22-1/16
ODU Net/Gross weight		lb	213.85/243.61
Operating temperature range	Cooling	°F	23 to 109.4
	Heating	°F	-13 to 95
	DHW	°F	-13 to 109.4



Cooling (A95W64.4)	Capacity	Btu/h	48448	Cooling (A95W44.6)	Capacity	Btu/h	47765
	Rated input	kW	3.93		Rated input	kW	5.71
	EER		12.33		EER		8.37
Heating (A44.6W95*)	Capacity	Btu/h	54589	Heating (A44.6W113)	Capacity	Btu/h	54589
	Rated input	kW	3.56		Rated input	kW	4.44
	COP		15.33		COP		12.29
Heating (A44.6W131)	Capacity	Btu/h	54589	Heating (A35.6W95)	Capacity	Btu/h	44353
	Rated input	kW	5.52		Rated input	kW	3.71
	COP		9.89		COP		11.95
Heating (A35.6W113)	Capacity	Btu/h	43671	Heating (A35.6W131)	Capacity	Btu/h	45718
	Rated input	kW	4.49		Rated input	kW	5.58
	COP		9.73		COP		8.19
Heating (A19.4W95)	Capacity	Btu/h	45377	Heating (A19.4W113)	Capacity	Btu/h	44012
	Rated input	kW	4.93		Rated input	kW	5.78
			9.2				7.61
Heating (A19.4W131)	Capacity	Btu/h	42648				
	Rated input	kW	6.19				
	COP		6.89				

***A44.6W95 indicates that the Ambient temperature is 44.6°F and the Water outlet temperature is 95°F.**

NOTES:

1. Sound pressure level is the maximum value tested under the two conditions of Heating: A44.6W95 and Cooling: A95W64.4.
2. Maximum domestic hot water temperature 140°F is only available with TBH support.
3. Some specifications may change, for reference only.



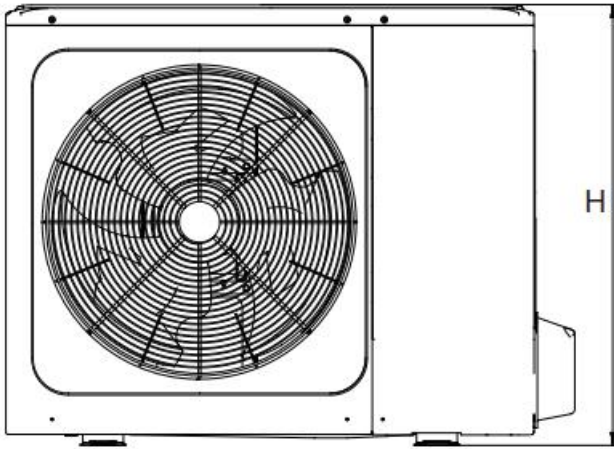


SUBMITTAL DATA - OUTDOOR UNIT
MHA- V16WD2MN8
Midea M thermal Arctic Series Split Heat Pump

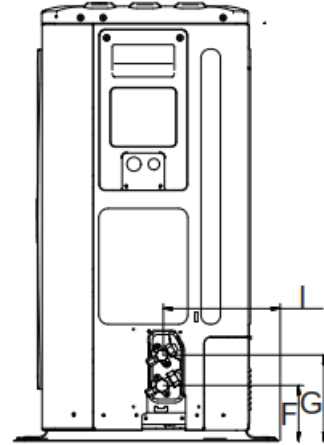
DIMENSIONAL DRAWINGS-INCHES (in)

CENTER OF GRAVITY

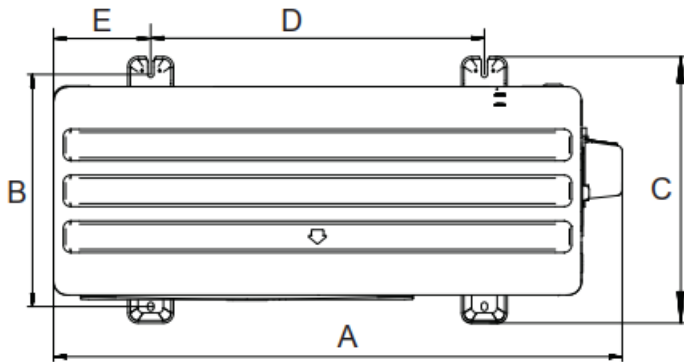
A	B	C	D	E	F	G	H	I
44-1/64	17-61/64	20-19/32	15-53/64	7-33/64	4-21/64	6-11/16	34-1/16	9-1/16



FRONT VIEW



SIDE VIEW



TOP VIEW

NOTES:

1. Due to Midea ongoing commitment to quality, Specifications, Ratings and Dimensions subject to change without notice and without incurring liability.
2. Improper installation, adjustment, alteration, service or maintenance can cause property damage or personal injury. Installation and service must be performed by a qualified installer and servicing agency.